

August 30, 2007

Chris Murphy
City of Portsmouth
Public Service Director
55 Mary Ann Street
Portsmouth, Ohio 45662

Re: City of Portsmouth – Spartan Stadium – Preliminary Observation.

Dear Mr. Murphy:

On August 29, 2007, at the request of the city, we performed a preliminary observation of the conditions of the visitor's bleachers of the Spartan Stadium. Below are the observations made:

1. The superstructure is constructed of concrete typical of the era. The superstructure contains cracks and spalling throughout. Efflorescence is readily identifiable in many locations. Water damage appears to be creating some of the cracking and disintegration of the concrete materials.
2. The stairway sections appear to be poured in separate pours creating construction joints. These joints are showing separation from the main structure.
3. The aluminum seats and treads connecting to the concrete structure piers show signs of failure. This is a safety concern. The piers show signs of cracking, and are subject to failure.

Based on our preliminary observations, the visitor side of Spartan Stadium contains safety concerns. Based on this limited observation, many repairs will be needed. The scope of this observation limits the engineers ability to fully evaluate the integrity of the overall structure.

A comprehensive evaluation in accordance with the guidelines outlined by the Structural Engineers Institute and American Society of Civil Engineers bulletin SEI/ASEC11-99 would result in a more defined conclusion.

Thank you:

Richard L. Howerton P.E., P.S.
richard.howerton@howertoneng.com

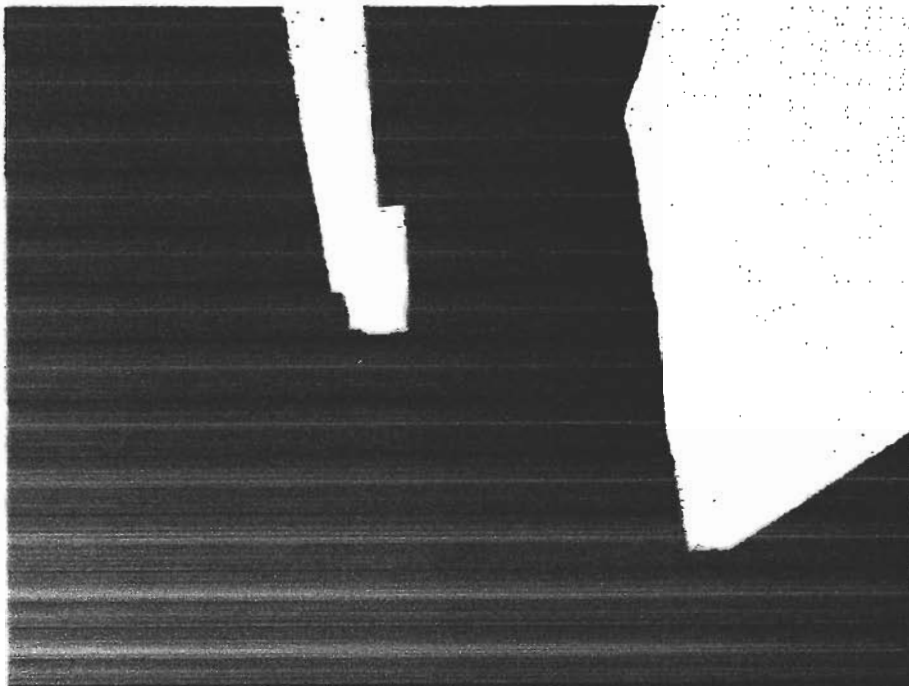


404A Main Street • Greenup, KY 41144 • (606) 473-5684 • 1-888-473-5684 FAX: • (606) 473-5684 • www.howertoneng.com

16747-B U.S. 52 West • Portsmouth, OH 45663 • (740) 858-1440 • FAX: (740) 858-1440



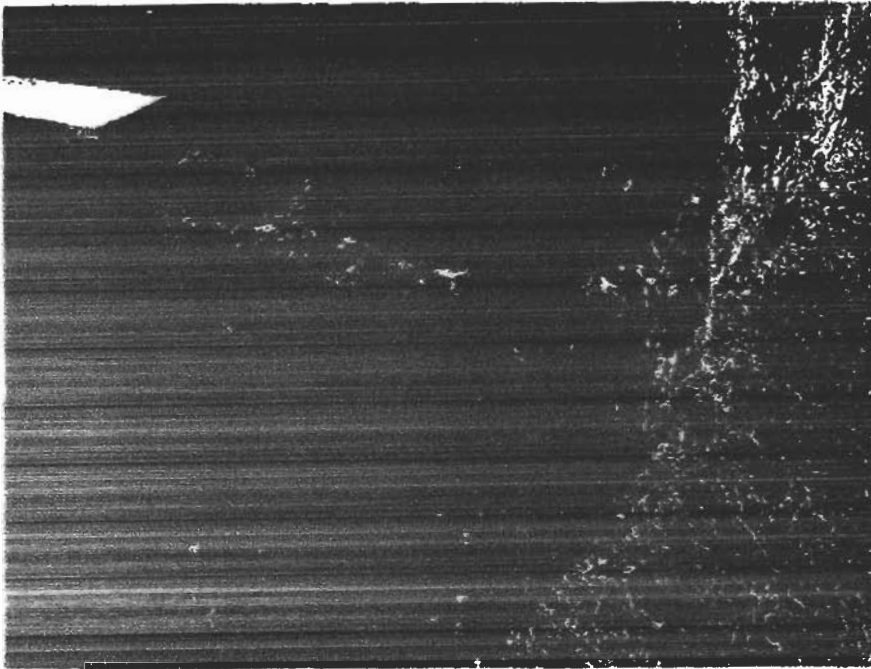
This photo shows the results of Efflorescence



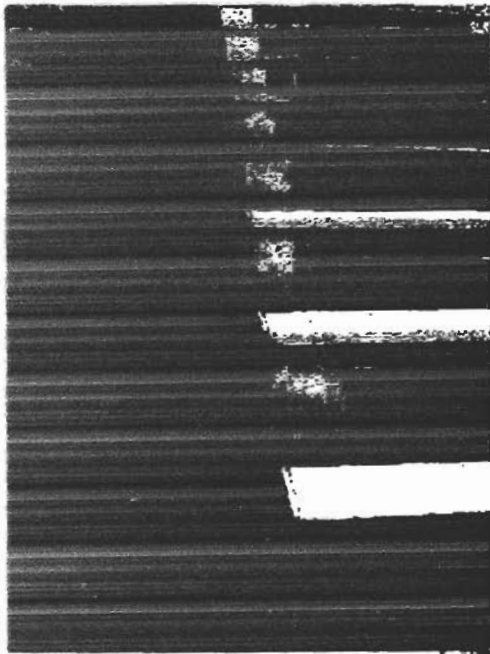
This photo show structural failure in bleacher supports.

404A Main Street • Covington, KY 41144 • (606) 473-5684 • 1-888-473-5684 FAX: • (606) 473-5684 • www.howestonking.com

16747-B U.S. 52 West • Portsmouth, OH 45663 • (740) 858-1440 • FAX: (740) 858-1440



This photo identifies evidence of cracking, spalling, and scaling.



Here the stairways are separating at the construction joint.

404A Main Street • Greensburg, KY 40314 • (606) 473-5684 • 1-888-473-5684 FAX: • (606) 473-5684 • www.howertoneng.com

16747-B U.S. 52 West • Portsmouth, OH 45663 • (740) 858-1440 • FAX: (740) 858-1440