



**JAMES D. KALB**  
MAYOR

**CITY OF PORTSMOUTH**  
**OFFICE OF THE MAYOR**

**TELEPHONE: 740 / 354-8807**  
**FAX: 740 / 354-8809**

**728 SECOND STREET, ROOM 1**  
**PORTSMOUTH, OHIO 45662**

October 16, 2009

Bob Mollette  
3<sup>rd</sup> Ward Councilman  
728 Second Street  
Portsmouth, Ohio

Re: Your Correspondence 09-017

Dear Mr. Mollette;

You indicated in your correspondence regarding the property at 2927 Sherman Road that the property has become a nuisance over the last two years. A search of our records indicate no complaint has been recorded until your September 17<sup>th</sup> correspondence.

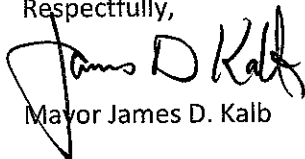
Per the attached report and dated pictures from our code enforcement officer, it appears there has been regular maintenance to control the grass and weeds. The vines in question are considered ornamental per information from the code enforcement officer (attached).

We have received no further correspondence regarding this issue, so I will consider the problem resolved.

As to the minor structure deficiencies; the memo from our code officer indicated the owner of the property is on active military duty serving our country and has been at a military hospital. I do not feel the deficiencies you described warrant any type of emergency actions by the City at this time.

If you or the neighbors of this property feel this problem has not been properly addressed, please advise me as such. We do not want our citizens to feel that their city government does not care or is dysfunctional as you mentioned in your correspondence.

Respectfully,



Mayor James D. Kalb

cc: Engineering/Health Department

Jo Ann Aeh, Council Clerk

September 28, 2009

James Kalb, Mayor

**Report on 2927 Sherman Rd.**

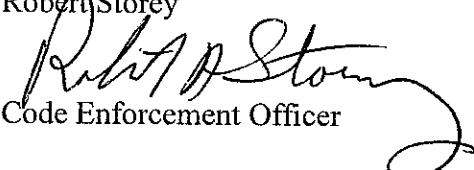
I visited this property on 8-7-09 , 8-21-09 , 9-10-09 and again this morning 9-28-09. As you can see by the dated photographs attached. There is a pattern of regular grass and weed care. There are a few minor maintenance issues on the back of the house.

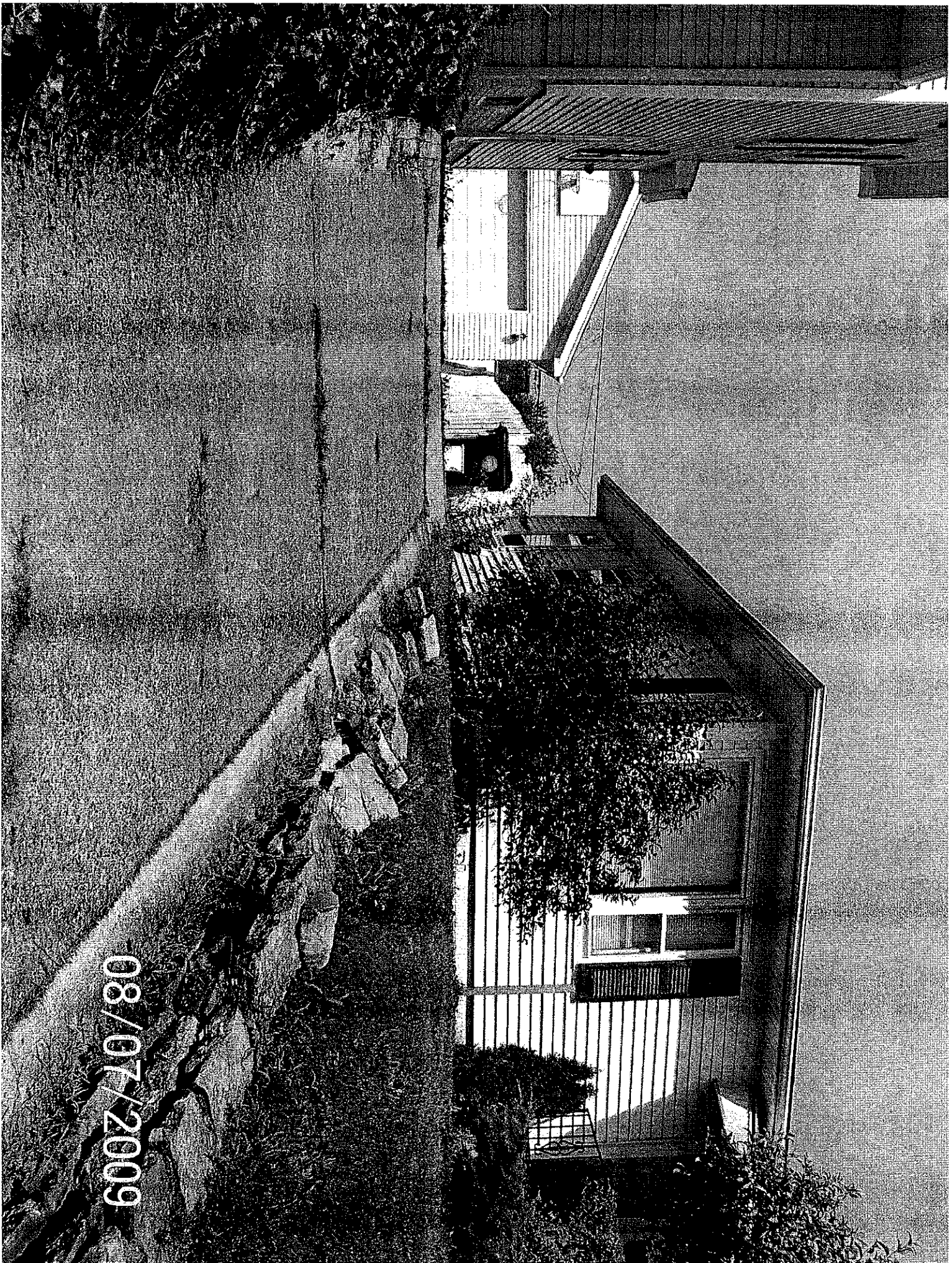
I was able to determine that the man that owns this house has went on active duty with the U.S. Army and is currently at the Walter Reed Army Hospital. At no time during any of my visits did any of the neighbors approach me with concerns or complaints. I checked at the Engineering office and could find no complaints in our records.

The vines attached to this house are in fact Virginia creeper, a landscaping ornamental.

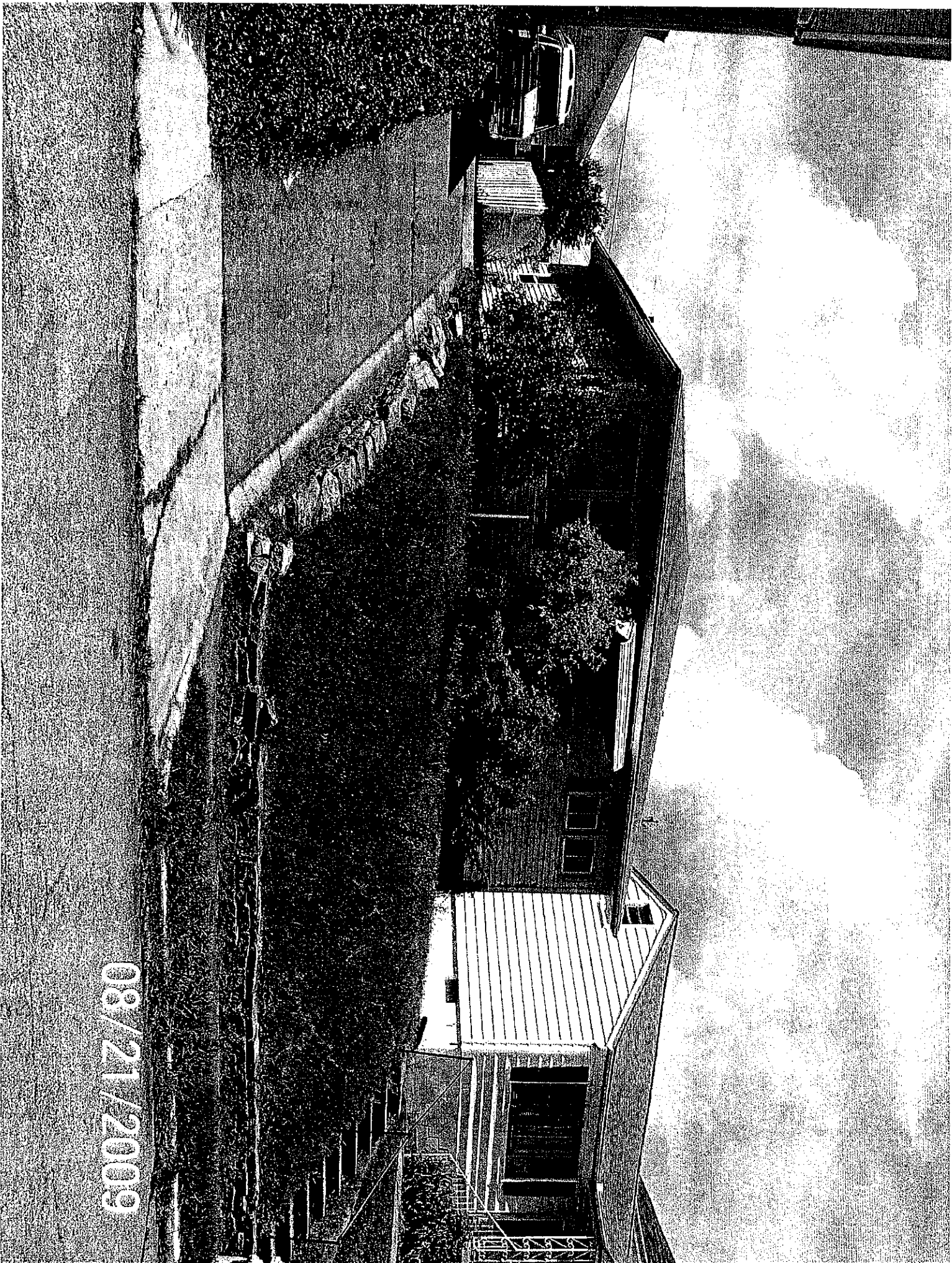
I shall continue to monitor this property as requested.

Robert Storey

  
Code Enforcement Officer

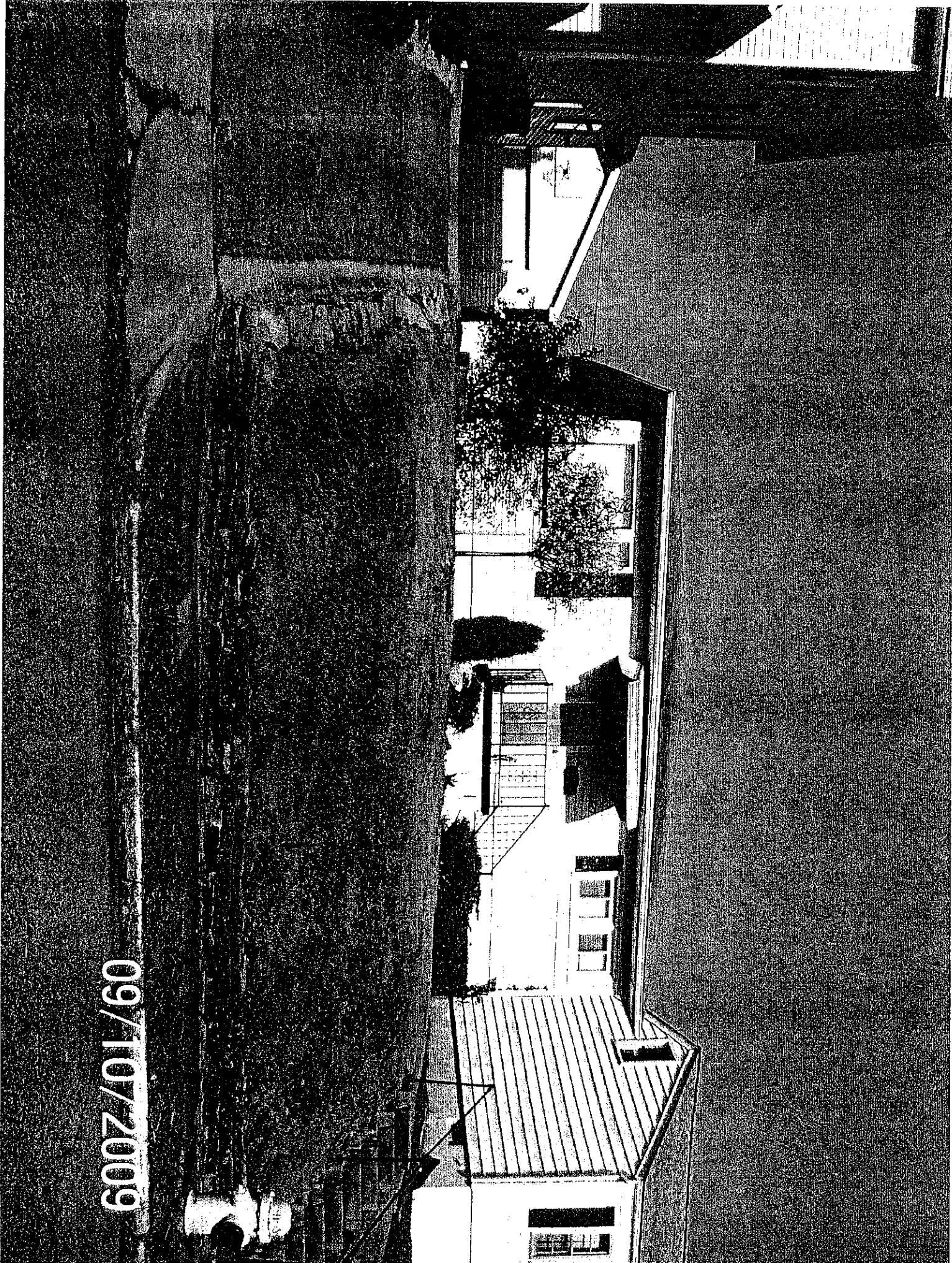


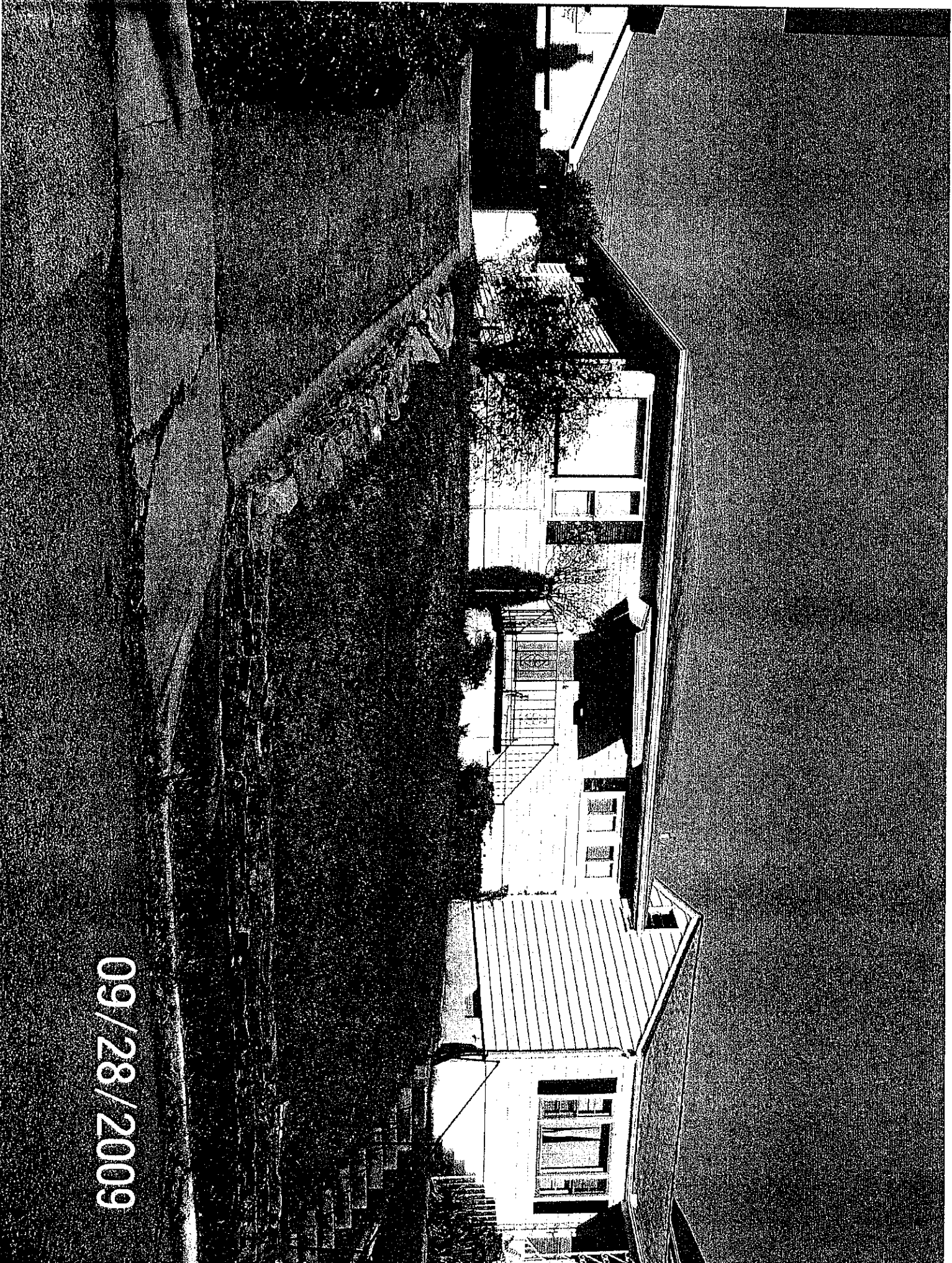
08/07/2009



08/21/2009

09/10/2009





09/28/2009

# GardenGuides.com

[Gardening](#) • [Plants](#) • [Information Sheets](#) • [Vines](#) • [Virginia Creeper Information Sheet](#)

Get recipes  
in a Dash.

**MOUSEOVER CAPS**



[BOOKMARK](#) [Print](#) [Share](#)

## Virginia Creeper - Vine Information Sheet

### Sponsored Links

[Order Plants Online](#)

[Garden Pots](#)

[Plant Seeds](#)

[House Plants](#)

[Organic Gardening](#)

[Garden Decor](#)

## Uses of Virginia Creeper: Landscaping, Medicinal, Culinary, etc...

**Erosion Control:** Although Virginia creeper has a rather open canopy structure, with its energetic growth and aboveground rooting and sprouting habits this species can be useful groundcover for erosion control and watershed protection, particularly in shaded areas.

**Restoration:** Virginia creeper is a native component of eastern climax forests.

**Wildlife:** Virginia creeper provides cover for many small birds and mammals. Songbirds are the principle consumers of the fruit; however deer, gamebirds and small mammals will also feed on them. Cattle and deer will sometimes browse on the foliage.

**Other:** Virginia creeper is often cultivated as an ornamental because of its attractive foliage. The bark has been used in domestic medicines as a tonic, expectorant and remedy for dropsy.

## General Characteristics

Virginia creeper is a native, woody, deciduous vine that climbs to a height of 60 feet on trees, poles or other structures, or forms a blanket of foliage up to 12 inches high along the ground. Stems are orange brown, finely hairy with branched tendrils that end in adhesive discs. The leaves are alternate and compound with 5, or rarely 3, leaflets that turn bright red in autumn. The leaflets are pointed, coarse-toothed and grow to 6 inches long. Inconspicuous green flowers borne in clusters during the spring are followed by a cluster of ¼-inch bluish black berries. There are 12,000 to 19,000 seeds per pound

## Required Growing Conditions

Virginia creeper is found throughout the eastern half of the United States. It prefers moist, well-drained soils but will grow in drier soils and conditions including coastal dune areas. Virginia creeper is fairly shade tolerant, however it is

often found along more open clearing borders, fencerows and streambanks. It is also salt tolerant.

## Cultivation and Care

Seeds should be drilled 3/8 inches deep in the fall or, preferably, in the spring after stratification. Virginia creeper can also be propagated from hardwood cuttings or layering. Literature suggests germination rates vary between 20 and 50% with optimum density for erosion protection at 10 plants per square foot. For restoration, partial cover, and wildlife plantings, it is often planted other species at densities of 1 plant or less per square foot.

## General Upkeep and Control

As Virginia creeper will grow in low fertility and droughty conditions maintenance for this species is minimal.

Cultivars, Improved, and Selected Materials (and area of origin) 'Engelmanni' and 'Monham.'

source: usda, nracs, plants database, plants.usda.gov.

national plant data center, [baton rouge](#), la 70874-4490 usa

**eHow** Home & Garden Partner  
Demand Media property